



# PREMIER *Markets*

## PRODUCT CATALOG

Graphics That Pop's Premier Micro Market Fixtures are designed for seamless functionality and sleek aesthetics. Our modular sections effortlessly connect using magnets and are secured with a tool-free pin system for quick assembly. Every unit is equipped with smooth-rolling wheels, making setup a breeze and allowing for easy movement during cleaning and maintenance. Customize your micro market with high-quality graphics to enhance visibility and branding. For added style and functionality, we offer optional doors and shelf covers, ensuring a polished look while optimizing storage and organization.

***Experience the perfect blend of innovation, mobility, and customization with our Premier Micro Markets!***



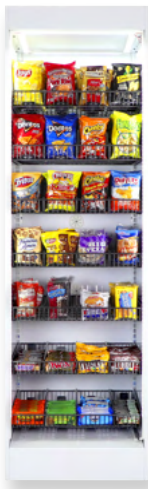
**LEG  
LEVELERS**



**Cabinets Pin Together With Ease**



**Customizable Display Graphics**



## **2ft A P**

**\$1,695**

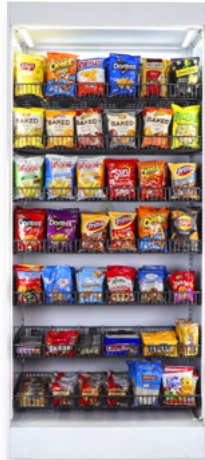
Premier  
Height 78 1/2"  
Width 23 3/8"  
Depth 25"



## **3ft B P**

**\$1,745**

Premier  
Height 78 1/2"  
Width 34 3/8"  
Depth 25"



## **3ft A P**

**\$1,745**

Premier  
Height 78 1/2"  
Width 34 3/8"  
Depth 25"



## **4ft B P**

**\$1,795**

Premier  
Height 78 1/2"  
Width 44 3/8"  
Depth 25"



## **4ft A P**

**\$1,795**

Premier  
Height 78 1/2"  
Width 44 3/8"  
Depth 25"



## **2ft C P**

**\$1,695**

Premier  
Height 78 1/2"  
Width 23 3/8"  
Depth 25"



## **2ft B P**

**\$1,695**

Premier  
Height 78 1/2"  
Width 23 3/8"  
Depth 25"



## **3ft C P**

**\$1,745**

Premier  
Height 78 1/2"  
Width 34 3/8"  
Depth 25"



## 4ft C P

**\$1,795**

Premier  
Height 78 1/2"  
Width 44 3/8"  
Depth 25"



## 2ft F P

**\$1,695**

Premier  
Height 78 1/2"  
Width 23 3/8"  
Depth 25"



## 2ft D P

**\$1,695**

Premier  
Height 78 1/2"  
Width 23 3/8"  
Depth 25"



## 3ft F P

**\$1,745**

Premier  
Height 78 1/2"  
Width 34 3/8"  
Depth 25"



## 3ft D P

**\$1,745**

Premier  
Height 78 1/2"  
Width 34 3/8"  
Depth 25"



## 4ft F P

**\$1,795**

Premier  
Height 78 1/2"  
Width 44 3/8"  
Depth 25"



## 4ft D P

**\$1,795**

Premier  
Height 78 1/2"  
Width 44 3/8"  
Depth 25"



## 2ft H P

**\$1,695**

Premier  
Height 78 1/2"  
Width 23 3/8"  
Depth 25"



### 3ft H P

**\$1,745**

Premier  
Height 78 1/2"  
Width 34 3/8"  
Depth 25"



### 4ft S P

**\$1,795**

Premier  
Height 78 1/2"  
Width 44 3/8"  
Depth 25"



### 4ft H P

**\$1,795**

Premier  
Height 78 1/2"  
Width 44 3/8"  
Depth 25"



### 2ft S P

**\$1,695**

Premier  
Height 78 1/2"  
Width 23 3/8"  
Depth 25"



### 3ft S P

**\$1,745**

Premier  
Height 78 1/2"  
Width 34 3/8"  
Depth 25"

## **Add-On Features**



### Outside Doors

- **2ft \$285**
- **3ft \$325**
- **4ft \$380**



### Shelf Covers

- **2ft \$11**
- **3ft \$12.5**
- **4ft \$15.5**



### Stainless Countertop

- **2ft \$99**
- **3ft \$119**
- **4ft \$125**



### Product Pushers & Dividers

- **Pushers: \$125**
- **Dividers: \$125**

**Shorter Cabinets Available, Same Great Features!**



Our shorter cabinets provide the same high-quality features and functionality, available in 2 ft, 3 ft, and 4 ft sizes. Whether you're looking for a compact solution or a stylish display option, our shorter cabinets are designed to meet your needs.



**2ft CI P**

**\$645**

Premier  
Height 34"  
Width 23 3/8"  
Depth 25"



**2ft CSI P**

**\$645**

Premier  
Height 34"  
Width 23 3/8"  
Depth 25"



**3ft CI P**

**\$745**

Premier  
Height 34"  
Width 34 3/8"  
Depth 25"



**3ft CSI P**

**\$745**

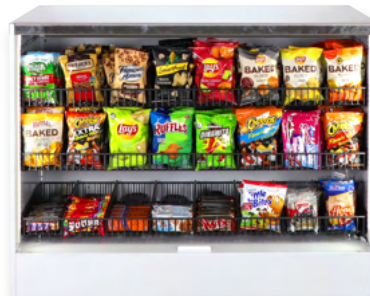
Premier  
Height 34"  
Width 34 3/8"  
Depth 25"



**4ft CI P**

**\$845**

Premier  
Height 34"  
Width 44 3/8"  
Depth 25"



**4ft CSI P**

**\$845**

Premier  
Height 34"  
Width 44 3/8"  
Depth 25"

**BEST BUY**

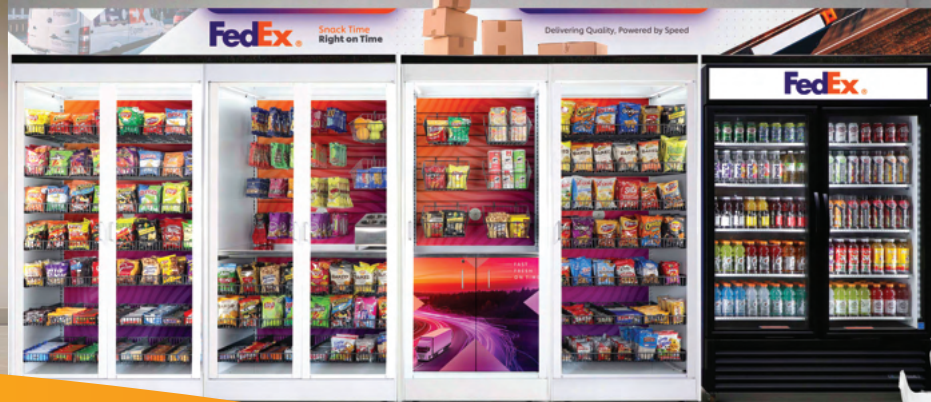


*Get well... soon!*  
**Breaktime**



**FedEx.** *Snack Time Right on Time*

*Delivering Quality. Powered by Speed*



## ***Bold, Stylish, and Built to Impress***

Take your break room to the next level with our new Premier line of Micro Markets. Designed for convenience, quality, and variety, our micro markets offer fresh, delicious options that keep your team fueled and satisfied.

***See how you can elevate your workplace experience today!***



**972-905-3523**

GRAPHICSTHATPOP.COM

**GTP** GRAPHICS THAT POP