

# Honeywell

aerospace.honeywell.com

# DELUXE

## PRODUCT CATALOG

Graphics That Pop's Deluxe Micro Markets are designed for quick assembly and great functionality. Our modular sections effortlessly connect using our tool-free pin system. These markets can be set up in minutes, instead of hours. They are constructed of a corrugated core or ultra durable plywood core depending on your needs. Our Deluxe markets utilize our Lock and Load display system. They roll in and connect seamlessly with magnets. This allows for easy movement during cleaning and maintenance. Customize your micro market with high-quality graphics to enhance visibility and branding. For added style and functionality, we offer optional graphic side panel, access doors and shelf covers, ensuring a polished look while optimizing storage and organization.

*Elevate your brand in minutes with our Deluxe Micro Market's unmatched functionality and style.*



**Markets Pin Together With Ease**



**LOCK AND LOAD COMPATIBLE**



**Customizable Display Graphics**



## 2ft AD

**\$1,895** *List Price*

Deluxe  
Height 91.5"  
Width 27 1/4"  
Depth 35"



## 2ft BD

**\$2,065** *List Price*

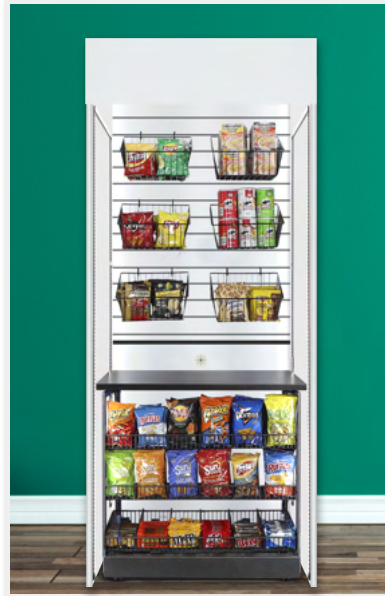
Deluxe  
Height 91.5"  
Width 27 1/4"  
Depth 35"



## 3ft AD

**\$1,945** *List Price*

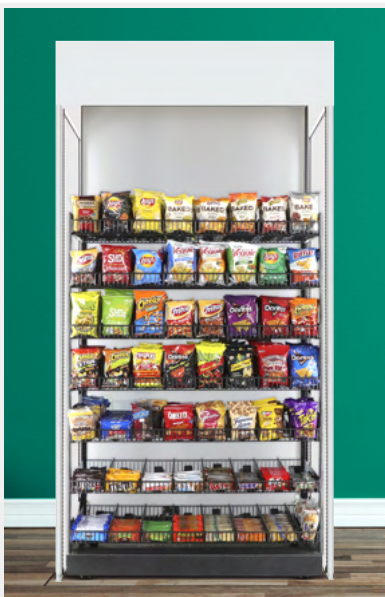
Deluxe  
Height 91.5"  
Width 38 1/2"  
Depth 35"



## 3ft BD

**\$2,115** *List Price*

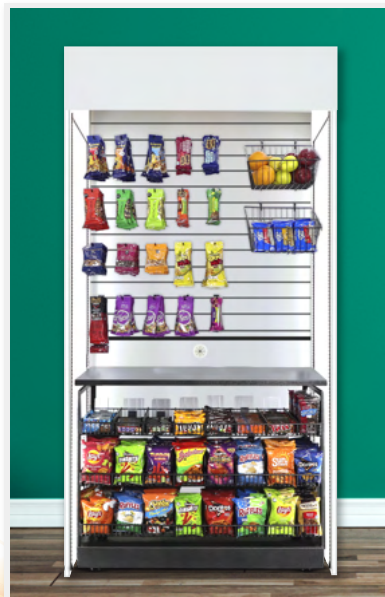
Deluxe  
Height 91.5"  
Width 38 1/2"  
Depth 35"



## 4ft AD

**\$1,995** *List Price*

Deluxe  
Height 91.5"  
Width 48 1/2"  
Depth 35"



## 4ft BD

**\$2,165** *List Price*

Deluxe  
Height 91.5"  
Width 48 1/2"  
Depth 35"



## 2ft CD

**\$2,015** List Price

Deluxe  
Height 91.5"  
Width 27 1/4"  
Depth 35"



## 3ft CD

**\$2,065** List Price

Deluxe  
Height 91.5"  
Width 38 1/2"  
Depth 35"



## 3ft DD

**\$2,165** List Price

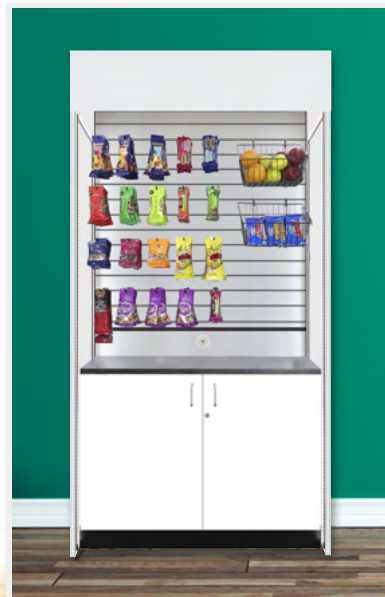
Deluxe  
Height 91.5"  
Width 38 1/2"  
Depth 35"



## 4ft CD

**\$2,165** List Price

Deluxe  
Height 91.5"  
Width 48 1/2"  
Depth 35"



## 4ft DD

**\$2,215** List Price

Deluxe  
Height 91.5"  
Width 48 1/2"  
Depth 35"



## 2ft HD

**\$2,015** List Price

Deluxe  
Height 91.5"  
Width 27 1/4"  
Depth 35"



## 3ft FD

**\$2,065** List Price

Deluxe  
Height 91.5"  
Width 38 1/2"  
Depth 35"



## 3ft HD

**\$2,065** List Price

Deluxe  
Height 91.5"  
Width 38 1/2"  
Depth 35"



## 4ft FD

**\$2,215** List Price

Deluxe  
Height 91.5"  
Width 48 1/2"  
Depth 35"



## 4ft HD

**\$2,065** List Price

Deluxe  
Height 91.5"  
Width 48 1/2"  
Depth 35"



## 2ft FS

**\$1,895** *List Price*

Deluxe  
Height 91.5"  
Width 27 1/4"  
Depth 35"



## 3ft FS

**\$1,945** *List Price*

Deluxe  
Height 91.5"  
Width 38 1/2"  
Depth 35"



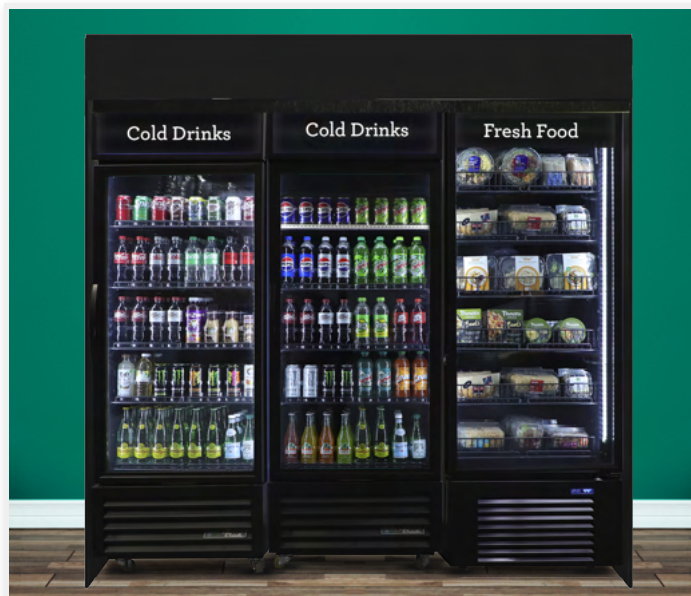
## 4ft FS

**\$1,945** *List Price*

Deluxe  
Height 91.5"  
Width 48 1/2"  
Depth 35"

# G SECTION

**\$1095** List Price



## 3ft CI D

**\$1,495** List Price

Deluxe  
Height 34"  
Width 38 1/8"  
Depth 35"



## 3ft CSI D

**\$1,495** List Price

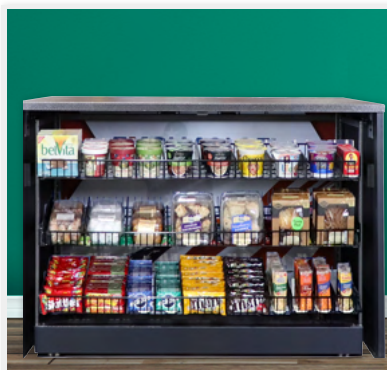
Deluxe  
Height 34"  
Width 38 1/8"  
Depth 35"



## 4ft CI D

**\$1,495** List Price

Deluxe  
Height 34"  
Width 48 1/8"  
Depth 35"



## 4ft CSI D

**\$1,495** List Price

Deluxe  
Height 34"  
Width 48 1/8"  
Depth 35"

# Add-On Features



## Custom Header

- \$200



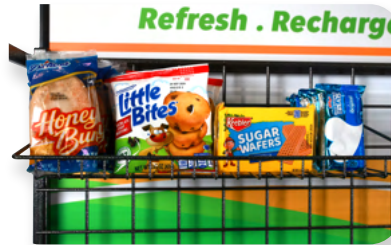
## Product Pushers & Dividers

- Pushers: \$125
- Dividers: \$125



## Shaped Header

- \$250



## Additional Baskets

- \$20



## Shelf Covers

- 2ft \$30
- 3ft \$30
- 4ft \$30



## Additional Pegs

- \$3



## Access Door

- \$225



## Cooler Shelves

Includes 5 Product Pushers & 4 Dividers  
25" Wide x 19" Deep

- \$100



## Graphic Side Panels

- \$100



## Vinyl Metal Finish

- \$100



## PlyWood Core

- \$100



## Electronic Shelf

- \$150



### **Effortless Assembly**

Assemble in minutes with slide-in pin connectors letting you focus on servicing your customers.

### **Customizable Display Graphics**

Enhance your retail space with custom graphics, choosing from robust plywood or corrugated cores complete with embedded threaded connections and protective plastic cladding.

### **Premium Countertops & Cabinetry**

Steel countertops feature a durable, powder-coated hammer finish, while cabinet doors and bases are powder-coated and wrapped in premium 3M vinyl.

*See how you can elevate your workplace experience today!*



**972-905-3523**

GRAPHICSTHATPOP.COM

**GTP** GRAPHICS THAT POP