



LOCK-N-LOAD

PRODUCT CATALOG

Lock and Load is the ultimate solution for efficient and cost-effective merchandising, designed to streamline your vending operations while maximizing profits. Its innovative back-loading design simplifies restocking, enhances product rotation, and reduces waste, ensuring fresher products for your customers. Customizable with adjustable shelving, dividers, and product pushers, Lock and Load offers a tailored display that keeps products organized and easily accessible. The magnetic lock-in system allows for effortless swapping of custom graphics panels, giving your vending setup a professional, branded look without the hassle of complex installations.

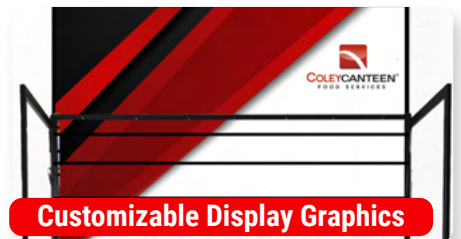
Experience the Next Level of Product Management!



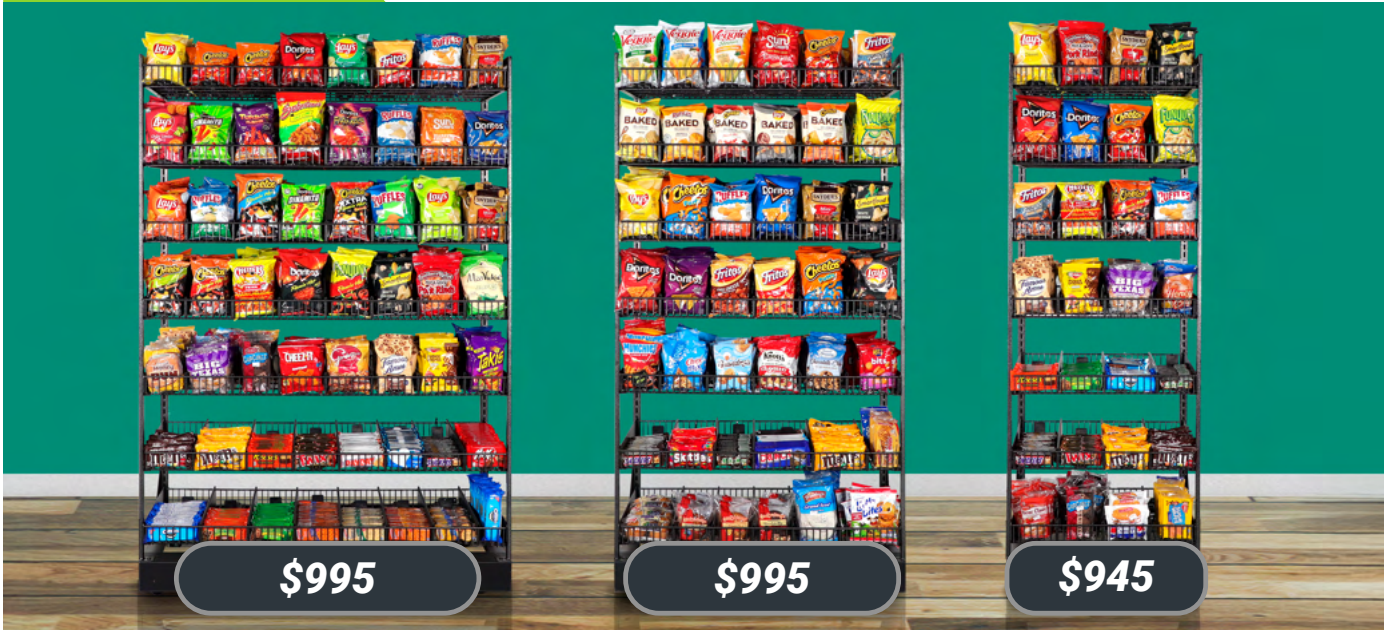
EASILY LOADS FROM THE BACK



ADJUSTABLE PUSHERS & DIVIDERS



Customizable Display Graphics



Available in 4ft, 3ft, and 2ft sizes featuring seven 19" wire shelves, the LA Cart is a robust steel display designed for convenience. It is fully compatible with our product pushers and dividers, allowing for seamless organization. Each shelf, along with the pushers and dividers, can be adjusted in 1" increments to accommodate various product sizes. Smooth-rolling wheels ensure effortless mobility. Enhance your branding with optional customization—choose a 16" Custom Header or a Full Back magnetic graphic to make your display stand out.

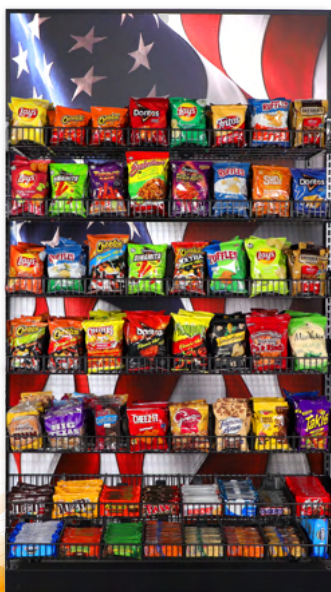
Header Graphic

16" and Interchangeable



- 2ft W/ Header \$995
- 3ft W/ Header \$1,045
- 4ft W/ Header \$1,045

Order your LA Cart with a 16" Header or Full Back Graphic to stand out!



Full Magnetic Back

Need more graphics? A full back connects easily with magnets so you can still load products from the back!

- 2ft W/ Full Back \$1,190
- 3ft W/ Full Back \$1,190
- 4ft W/ Full Back \$1,190

LA CART DIMENSIONS

2ft

LA Lock N Load
Height 65"
Width 23"
Depth 21"

3ft

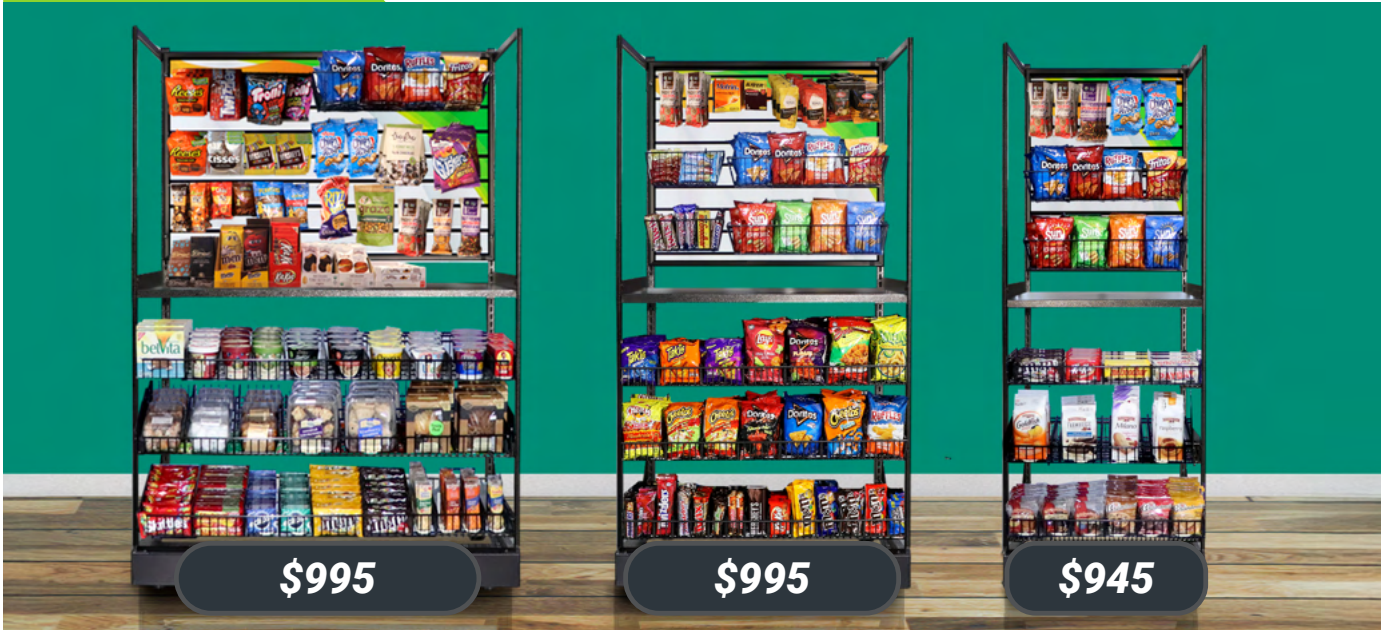
LA Lock N Load
Height 65"
Width 34"
Depth 21"

4ft

LA Lock N Load
Height 65"
Width 44"
Depth 21"

*Adding a graphic increases the height and depth.
Height: 79" Depth: 22"

Bulk Pricing Available. Call For Details!



Available in 4ft, 3ft, and 2ft sizes featuring three 19" wire shelves, a 19" countertop with slatwall, 10 slatwall pegs, and 2 baskets the LB Cart is a durable steel solution designed for efficiency and convenience. It's compatible with our product pushers and dividers for better organization. Smooth-rolling wheels ensure effortless mobility. Elevate your branding with custom options, including a 16" Custom Header or a Full Back magnetic graphic for an eye-catching display.

Header Graphic

16" and Interchangeable



- 2ft W/ Header \$995
- 3ft W/ Header \$1,045
- 4ft W/ Header \$1,045

Order your LB Cart with a 16" Header or Full Back Graphic to stand out!



Full Magnetic Back

Need more graphics? A full back connects easily with magnets so you can still load products from the back!

- 2ft W/ Full Back \$1,190
- 3ft W/ Full Back \$1,190
- 4ft W/ Full Back \$1,190

LB CART DIMENSIONS

2ft

LB Lock N Load
Height 65"
Width 23"
Depth 21"

3ft

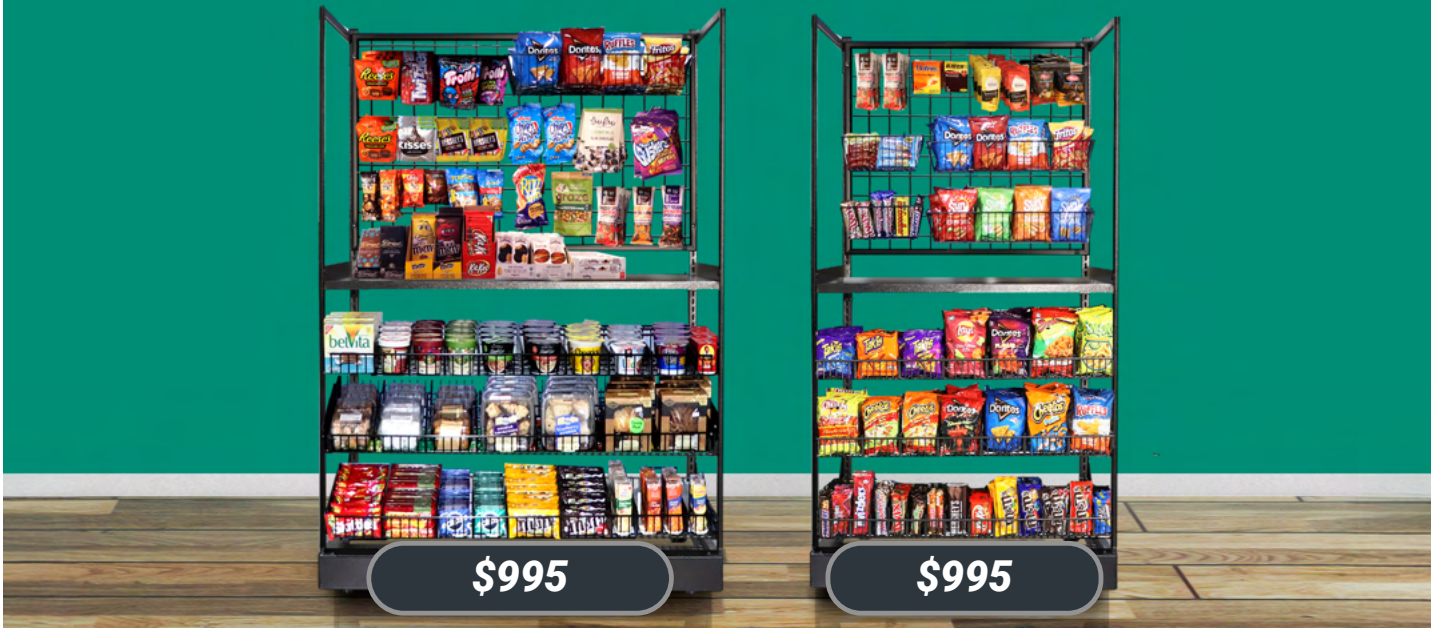
LB Lock N Load
Height 65"
Width 34"
Depth 21"

4ft

LB Lock N Load
Height 65"
Width 44"
Depth 21"

*Adding a graphic increases the height and depth.
Height: 79" Depth: 22"

Bulk Pricing Available. Call For Details!



\$995

\$995

Available in 4ft and 3ft sizes featuring three 19" wire shelves, a 19" countertop with gridwall, 10 grid pegs, and 2 baskets the LC Cart is a durable steel solution designed for efficiency and convenience. It's compatible with our product pushers and dividers for better organization. Smooth-rolling wheels ensure effortless mobility. Elevate your branding with custom options, including a 16" Custom Header or a Full Back magnetic graphic for an eye-catching display.

Header Graphic

16" and Interchangeable



- **3ft W/ Header**
\$1,045
- **4ft W/ Header**
\$1,045

Order your LC Cart with a 16" Header or Full Back Graphic to stand out!



Full Magnetic Back

Need more graphics? A full back connects easily with magnets so you can still load products from the back!

- **3ft W/ Full Back**
\$1,190
- **4ft W/ Full Back**
\$1,190

LC CART DIMENSIONS

3ft

LC Lock N Load
Height 65"
Width 34"
Depth 21"

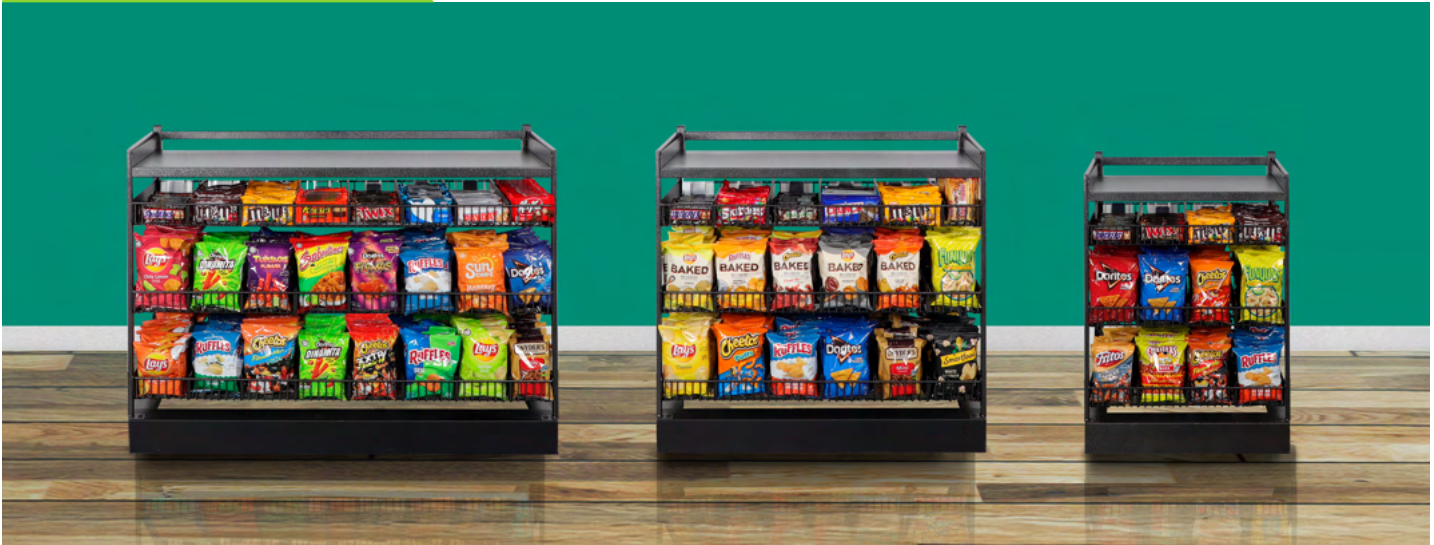
4ft

LC Lock N Load
Height 65"
Width 44"
Depth 21"

*Adding a graphic increases the height and depth.
Height: 79" Depth: 22"

Bulk Pricing Available. Call For Details!

Shelf Island



Our shelf islands provide the same high-quality features and functionality of our full size Lock N Loads, available in 2 ft, 3 ft, and 4 ft sizes. If you're looking for a compact solution, these shorter options are designed to meet your needs.

4ft LSI

• **\$595**

Height 33"
Width 44"
Depth 21"

3ft LSI

• **\$595**

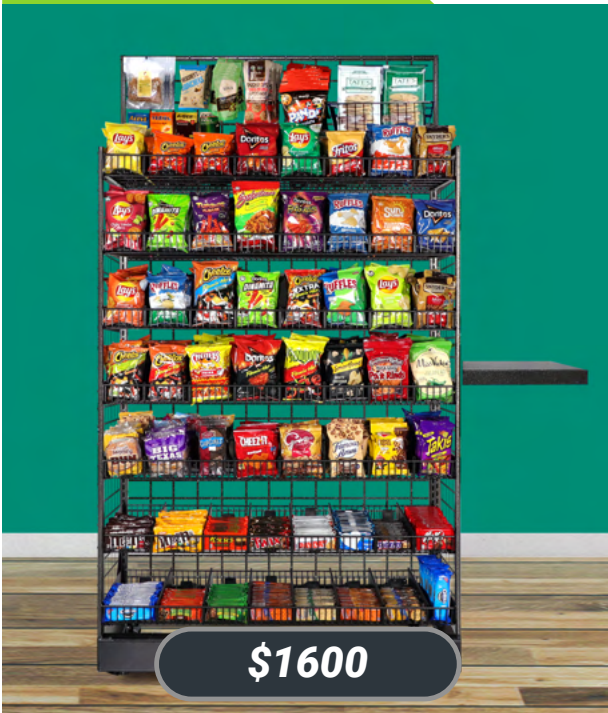
Height 33"
Width 34"
Depth 21"

2ft LSI

• **\$595**

Height 33"
Width 23"
Depth 21"

LAX



2ft

Height 80"
Width 24"
Depth 22"

3ft

Height 80"
Width 35"
Depth 22"

4ft

Height 80"
Width 44"
Depth 22"

Our LAX Display Cart is a versatile, all-gridwall merchandising solution designed to maximize your retail space. Constructed from durable steel, this cart offers a full 360-degree display area, perfect for showcasing products from every angle. Enhance functionality with an optional gridwall header for extra display capacity, or add optional countertop shelf to create a convenient kiosk area tailored to your specific needs. Ideal for retail stores, trade shows, and promotional events.

\$1600

Add-On Features



Magnetic Back

- \$300



Product Pushers & Dividers

- **Pushers: \$125**
- **Dividers: \$125**



Shelf Covers

- 2ft \$30
- 3ft \$30
- 4ft \$30



Additional Baskets

- \$20



CID

- 3ft \$1,495
- 4ft \$1,495



Additional Pegs

- \$3



The Display System Built For Efficiency And Convenience.

Lock N Load Displays simplify product management with a rear-loading system that saves time. Adjustable dividers and locking pushers keep products fresh and reduce waste. Designed for versatility, these sleek displays integrate seamlessly into any space for efficient, organized merchandising.

Smarter Stocking, Fresher Products, Effortless Merchandising.



972-905-3523

GRAPHICSTHATPOP.COM

GTP GRAPHICS THAT POP