

LOCK-N-LOAD

Customizable Display Cart System

BUY 3 AND SAVE!



Buy 3 for As Low As \$595 Each!

Available in 7 Shelf, Slatwall, and Gridwall options. Lock N Load offers flexibility to match your product needs and display preferences. Pricing varies by model.



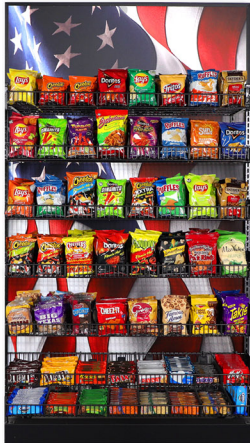
ONE SYSTEM.
Multiple Ways to Merchandise.

LA CART



Starting at \$945

Full Magnetic Back



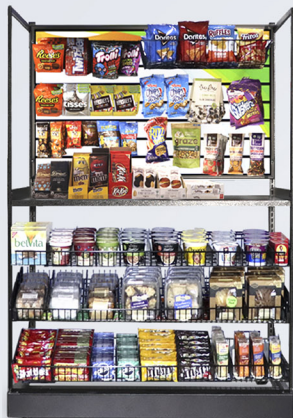
Header Graphic



Add
**Custom
Graphics.**
Any Lock N Load.
Starting
at \$50!

Available in 4ft, 3ft, and 2ft sizes, the LA Cart features seven wire shelves designed for high product capacity. With smooth-rolling wheels and compatibility with pushers and dividers, it offers flexible merchandising and optional custom branding.

LB CART



Starting at \$945

Full Magnetic Back

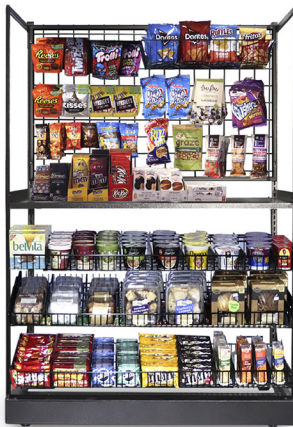


Header Graphic



Available in 4ft, 3ft, and 2ft sizes, the LB Cart features wire shelves and slatwall. Compatible with pushers and dividers, it keeps products organized and accessible, with smooth mobility and optional custom branding.

LC CART



Starting at \$995

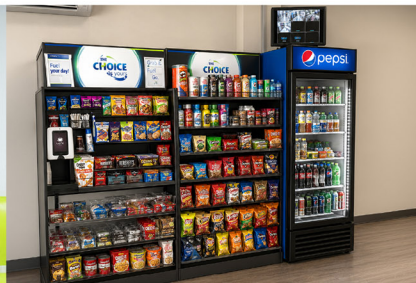
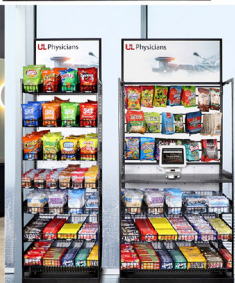
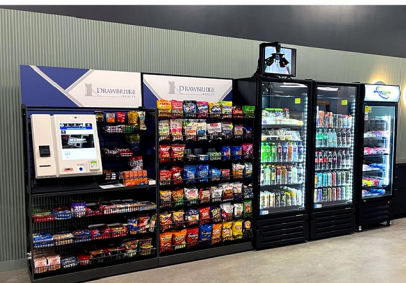
Full Magnetic Back



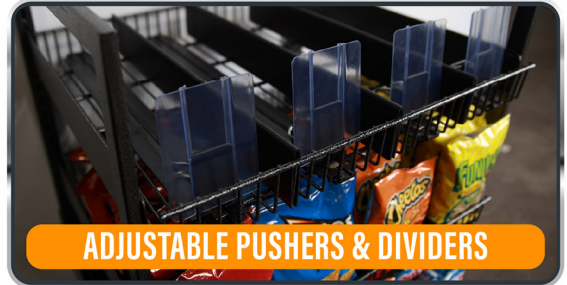
Header Graphic



Available in 4ft and 3ft sizes, the LC Cart features wire shelves and gridwall. Designed for easy organization with smooth-rolling wheels, it also offers optional custom branding upgrades.



The Fastest & Most Affordable Way To Set Up A Location



972-905-3523

GRAPHICSTHATPOP.COM

GTP GRAPHICS THAT POP



BUY 3 Lock N Loads & Save Big!

>> Get Bundle Pricing